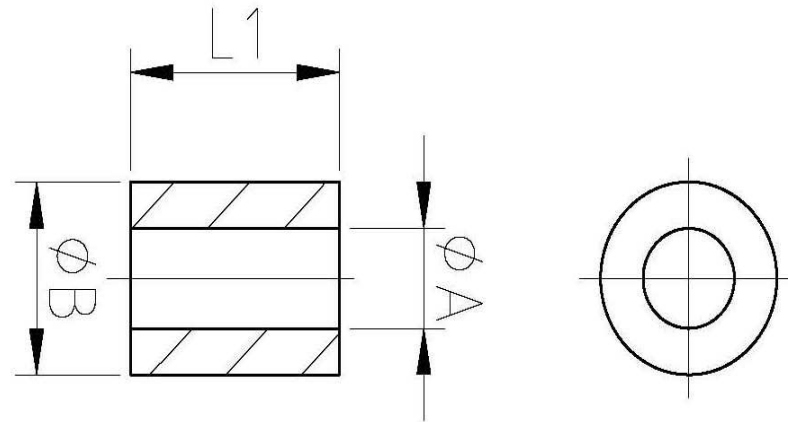


# 常规轴承

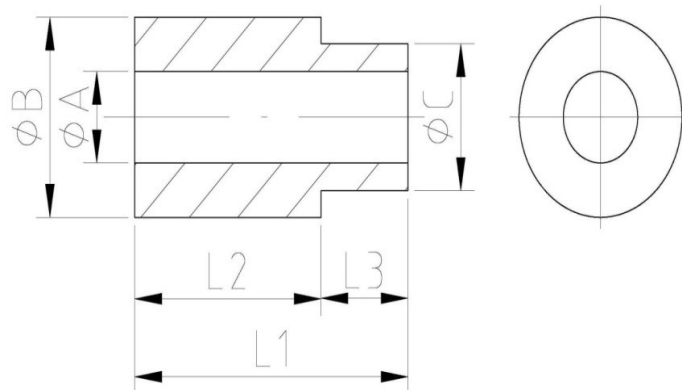


序号	材质	含油率(%)	密度	$\Phi A$	$\Phi B$	L1	备注
1	SMF4040	-	6.8 MIN	45.15(+0.1/0)	65.8(0/-0.15)	4(0/-0.1)	
2	SMF5030	-	6.8 MIN	9(+0.025/-0.015)	14(0/-0.2)	1.8±0.05	
3	SMF5040	8 MIN	6.8 MIN	6(+0.035/+0.01)	10(0/-0.03)	8(0/-0.15)	
4	SMF5040	-	6.8 MIN	8(-0.005/-0.03)	12.9(+0.02/-0.04)	5.4(0/-0.1)	
5	SBF2118	-	6.8 MIN	5(+0.02/0)	11(0/-0.02)	3(0/-0.1)	
6	SBF2118	20 MIN	5.6~6.4	6(0/-0.02)	10(0/-0.03)	5(0/-0.1)	
7	SBF2118	12 MIN	6.0 MIN	12.2(0/-0.02)	15.1(+0.04/+0.02)	9.7±0.1	
8	SBF2218	8 MIN	6.2 MIN	6(+0.06/+0.03)	10(0/-0.03)	4.2±0.1	
9	SBF2118	16 MIN	6.2 MIN	6(+0.02/0)	10(+0.05/0)	8.5(0/-0.1)	
10	SBF2118	16 MIN	6.2 MIN	4(+0.03/+0.01)	6.5(+0.05/0)	4	
11	SBF2118	-	7.0 MIN	5(+0.03/+0.015)	10(+0.025/+0.01)	5.5(+0.1/0)	
12	SBF2118	14 MIN	6.2 MIN	10(+0.025/+0.01)	16(+0.03/+0.01)	12(0/-0.15)	
13	SBF2118	16 MIN	6.2 MIN	12±0.01	18(+0.05/+0.02)	10.4(0/-0.1)	
14	SBF2118	16 MIN	6.2 MIN	12±0.01	18(+0.05/+0.02)	8(0/-0.1)	
15	SBF2118	15 MIN	6.0 MIN	10(+0.04/+0.02)	14(+0.035/+0.01)	16±0.1	
16	SBF2118	18 MIN	6.0~6.2	8(+0.02/0)	12(+0.03/+0.01)	5.5±0.1	
17	SBF2118	-	6.8 MIN	10(+0.022/0)	19(+0.04/+0.02)	5±0.05	
18	SBF2118	14 MIN	6.0 MIN	8(+0.02/0)	12(+0.03/+0.01)	8.3±0.05	
19	SBF2118	15 MIN	6.0 MIN	9(+0.02/0)	17(+0.03/+0.01)	16±0.05	

20	SBF2118	18 MIN	6.0~6.4	12(+0.059/+0.034)	16(+0.05/+0.03)	6.6±0.05	
21	SBF2118	18 MIN	6.1 MIN	8(+0.02/0)	12(-0.005/-0.02)	10	
22	SBF2118	-	-	7.6±0.025	10(+0.032/+0.023)	16(0/-0.5)	
23	SBF2118	18 MIN	6.0 MIN	8.03(+0.03/0)	15(+0.02/0)	5	
24	SBF2118	15 MIN	6.0 MIN	6 (+0.025/+0.001)	10±0.05	5.6	
25	SBF2218	18 MIN	6.0~6.2	8(+0.02/0)	12(+0.028/+0.01)	7±0.05	
26	Sint D30	-	6.8 MIN	25.1±0.1	30(+0.056/+0.035)	8±0.1	
27	Sint D30	-	6.8 MIN	15.4(+0.043/0)	24(0-0.02/-0.041)	11.2	
28	Sint D30	-	6.8 MIN	25.1±0.05	30(+0.056/+0.035)	8	
29	Sint D30	-	6.8 MIN	30.03	35(+0.068/+0.043)	9.5±0.1	
30	Sint D30	-	-	8(+0.03/+0.07)	12(+0.009/-0.009)	8±0.1	
31	CuSn10	18 MIN	6.4 MIN	9(+0.04/+0.02)	13(+0.048/+0.028)	12±0.1	
32	CuSn10	15 MIN	6.0 MIN	4.5(+0.015/0)	9(-0.1/-0.2)	32.5±0.3	
33	CuSn10	15 MIN	6.0 MIN	4.5(+0.015/0)	9(-0.1/-0.2)	32.5±0.3	
34	CuSn10	15 MIN	6.1 MIN	10(+0.015/0)	13	20	
35	CuSn10	20 MIN	6.4 MIN	14(+0.018/0)	20(+0.056/+0.035)	30±0.05	内径带台阶
36	CuSn10	14 MIN	6.2 MIN	3(+0.015/0)	6(+0.015/0)	5(+0.15/0)	
37	CuSn10	18 MIN	6.1 MIN	19.3(0/-0.025)	22.3(0/-0.025)	9.4±0.13	
38	CuSn10	18 MIN	5.8~6.4	7(+0.028/+0.013)	10(+0.032/+0.023)	8	
39	CuSn10	18 MIN	5.8~6.4	8(+0.028/+0.013)	12(+0.032/+0.023)	10	
40	CuSn10	18 MIN	5.8~6.4	8(+0.028/+0.013)	12(+0.032/+0.023)	8±0.1	
41	CuSn10	19 MIN	6.2~6.3	7.91±0.01	11.25 (0/-0.02)	16-15.75	
42	CuSn10	-	6.4~6.8	15.621-15.6464	22.3012-22.2758	19.96	
43	CuSn10	-	6.4~6.8	33.43	44.04	41.66	
44	CuSn10	-	6.4~6.8	25.781-25.8064	38.1508-38.1762	22.225	
45	CuSn10	18 MIN	5.8~6.4	7(+0.028/+0.013)	10(+0.032/+0.023)	9	
46	CuSn10	18 MIN	5.8~6.4	7(+0.02/0)	11(+0.02/0)	9±0.1	
47	FC-0208	-	6.4~6.8	9.195±0.05	15±0.1	6.45±0.1	内径带台阶
48	FC-0208	-	6.8 MIN	12(+0.06/+0.02)	15.4±0.1	7.4(0/-0.1)	
49	FC-0208	-	6.2~6.4	6(+0.04/+0.01)	10(+0.03/+0.01)	10	
50	FC-0208	15 MIN	6.0 MIN	6.4	9.5(0/-0.05)	17(0/-0.1)	
51	FC-0208	-	6.6 MIN	33.3(+0.15/0)	37.5±0.1	-	
52	FC-0208	-	7.0 MIN	6(+0.03/+0.015)	10(+0.025/+0.01)	6.5(+0.1/0)	
53	FN-0205	15 MIN	6.0 MIN	12(+0.018/0)	16(+0.048/+0.028)	22±0.1	
54	FN-0205	15 MIN	6.0 MIN	12(+0.018/0)	16(+0.048/+0.028)	12±0.1	
55	FN-0205	12 MIN	6.2 MIN	6(+0.04/+0.02)	12(+0.08/+0.05)	5.2±0.08	

56	FN-0205	3 MIN	7.2 MIN	17(+0.055/+0.032)	23±0.006	12±0.1	
57	FL 4605	-	6.6~7.0	14.7066-14.478	23.3807-23.4061	2.54	
58	FZ1260	-	6.2 MIN	20(+0.025/0)	28(+0.021/0)	20	
59	FZ1260	-	6.1 MIN	18(+0.025/0)	22(+0.021/0)	45.5	
60	FZ1260	-	6.1 MIN	20(+0.025/0)	28(+0.021/0)	12.5	
61	FZ2170	-	6.5~6.6	7(+0.047/+0.025)	10±0.1	9±0.1	内径为D字型

# 带台阶轴承



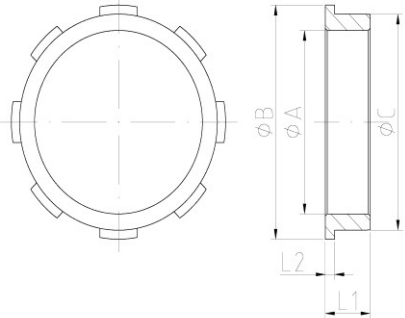
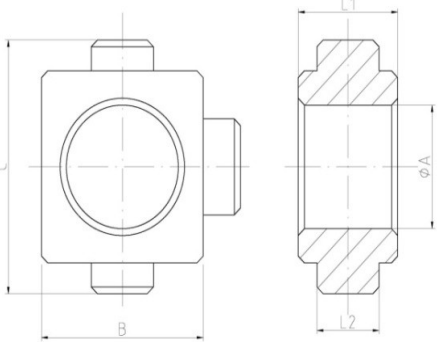
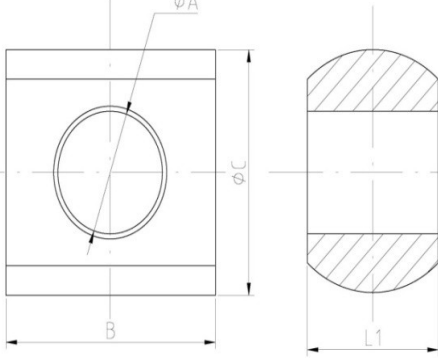
序号	材质	含油率 (%)	密度 (g/cm <sup>3</sup> )	ΦA	ΦB	ΦC	L1	L2	L3	备注
1	SMF4020	16 MIN	6.0 MIN	12(+0.03/+0.01)	18(+0.05/+0.028)	16(+0.048/+0.02)	23.8(0/-0.2)	-	8.5±0.01	
2	SMF4040	-	7.15MIN	15.8(-0.04/-0.06)	30	22±0.1	13.1±0.1	4.4±0.1	-	
3	SMF4040	-	6.6~7.0	5.1(+0.1/0)	14	7.9±0.05	5.9±0.05	-	3.95(+0.05/0)	
4	SMF5040	18 MIN	5.9~6.3	10.35(+0.02/0)	15(+0.025/0)	13.05(0/-0.05)	14.5(0/-0.1)	-	3.2±0.05	
5	SMF5040	18 MIN	6.1 MIN	8.9(+0.03/0)	14(0/-0.1)	12(+0.04/+0.02)	17.5±0.1	1.7±0.05	-	
6	SMF5040	18 MIN	6.1 MIN	8.9(+0.03/0)	14(0/-0.1)	12(+0.04/+0.02)	10.5±0.1	1.7±0.05	-	
7	SBF2118	16 MIN	6.0 MIN	12.1±0.1	18(+0.035/+0.01)	16(+0.02/0)	30.7±0.075	22.3(+0.15/0)	-	
8	SBF2118	16 MIN	6.0 MIN	12(+0.02/0)	18(+0.02/0)	16(+0.02/0)	23.8(0/-0.15)	-	8.3(+0.15/0)	
9	SBF2118	-	6.2 MIN	12(+0.03/+0.01)	18(+0.05/+0.03)	16(+0.04/+0.02)	15.5(0/-0.1)	5(0/-0.1)	-	
#	SBF2118	16 MIN	6.0 MIN	12(+0.027/+0.016)	18(+0.051/+0.033)	16(+0.051/+0.033)	23.8±0.1	8.2(+0.1/0)	-	
#	SBF2118	16 MIN	6.0 MIN	12(+0.027/+0.016)	18(+0.051/+0.033)	16(+0.051/+0.033)	23.8±0.1	15.5(0/-0.1)	-	
#	SBF2118	16 MIN	6.2 MIN	12.65(+0.05/0)	23±0.05	18.5(+0.03/+0.01)	19.2 (0/-0.1)	3±0.05	-	
#	SBF2118	16 MIN	6.0 MIN	12(+0.024/+0.006)	24	18(+0.041/+0.023)	25(+0.1/0)	-	23	外形为异形
#	SBF2118	14 MIN	6.0 MIN	12(+0.03/+0.01)	18(+0.05/+0.03)	16(+0.04/+0.02)	19.5±0.1	11.5±0.1	-	
#	SBF2118	14 MIN	6.2 MIN	12(-0.01/-0.03)	18(+0.05/+0.03)	16(+0.04/+0.02)	19.5±0.1	-	11.5±0.1	
#	SBF2118	14 MIN	6.0 MIN	12(+0.03/+0.01)	18(+0.05/+0.03)	16(+0.04/+0.02)	21±0.1	9.5±0.1	-	
#	SBF2118	16 MIN	6.0 MIN	12.8(+0.02/0)	23±0.05	18.5(+0.03/+0.01)	18.8(+0.15/0)	3±0.05	-	
#	SBF2118	-	6.0 MIN	10(0/-0.015)	15(0/-0.05)	16.8±0.1	8.6±0.1	4.5±0.1	-	台阶外径带防滑齿
#	SBF2118	18 MIN	6.2 MIN	8.9(+0.02/0)	14(0/-0.1)	12(+0.04/+0.02)	19.5±0.1	1.7±0.05	-	

#	SBF2118	18 MIN	6.0 MIN	13.4(+0.02/0)	19.6(+0.048/+0.028)	17.6(+0.048/+0.028)	24.8(0/-0.2)	-	9.3(+0.15/0)	
#	SBF2118	18 MIN	6.0 MIN	15(+0.05/+0.03)	22.6±0.06	19(+0.04/+0.02)	10.1(0/-0.1)	1.9±0.05	-	
#	SBF2118	16 MIN	6.0 MIN	10(+0.03/+0.01)	16(+0.05/+0.02)	14(+0.05/+0.02)	19(0/-0.2)	13.5(0/-0.2)	-	
#	SBF2118	12 MIN	6.0 MIN	18(+0.04/+0.02)	29	24(+0.03/+0.01)	16.2±0.1	-	14±0.1	
#	SBF2118	-	6.2 MIN	6(+0.04/+0.02)	Φ16	11±0.1	10.2±0.1	2.5±0.1	-	
#	SBF2118	16 MIN	6.2 MIN	6(+0.03/0)	10.5±0.1	9(+0.062/+0.04)	9.5	1.6±0.05	-	
#	SBF2118	18 MIN	6.0~6.4	9(+0.059/+0.034)	15.1(+0.05/+0.03)	13(+0.05/+0.03)	12±0.05	4±0.05	-	
#	SBF2118	18 MIN	6.0~6.4	12(+0.02/0)	18(+0.048/+0.028)	16(+0.048/+0.028)	22.6(+0.02/-0.13)	10.6(+0.12/-0.03)	-	
#	SBF2118	18 MIN	5.6~5.7	12(+0.042/+0.021)	20(0/-0.2)	16(0/-0.021)	22.6(0/-0.3)	2.5(0/-0.2)	-	台阶外形为异形
#	SBF2118	18 MIN	6.0 MIN	8(+0.02/0)	14(0/-0.1)	12(+0.025/+0.01)	8.5±0.05	2.7(+0.1/0)	-	
#	SBF2118	16 MIN	6.0 MIN	12(+0.03/+0.01)	18(+0.05/+0.02)	16(+0.05/+0.02)	23.8(0/-0.2)	8.80/-0.2)	-	
#	SBF2118	16 MIN	6.0 MIN	10(+0.03/+0.01)	18(+0.05/+0.02)	16(+0.05/+0.02)	27(0/-0.2)	18.70/-0.2)	-	内径带台阶
#	SBF2118	16 MIN	6.0 MIN	10(+0.03/+0.01)	18(+0.05/+0.02)	16(+0.05/+0.02)	30.5(0/-0.2)	22.5(0/-0.2)	-	内径带台阶
#	SBF2118	16 MIN	6.0 MIN	12(+0.03/+0.01)	18(+0.05/+0.02)	16.25(+0.05/+0.02)	37.2(0/-0.3)	25.2(0/-0.2)	-	
#	SBF2118	16 MIN	6.0 MIN	12(+0.03/+0.01)	18(+0.05/+0.02)	16(+0.05/+0.02)	37(0/-0.3)	29(0/-0.2)	-	
#	SBF2118	12 MIN	6.2~6.4	13.4(+0.02/0)	19.6(+0.048/+0.028)	17.6(+0.048/+0.028)	23.8(0/-0.2)	-	8.3(+0.15/0)	
#	SBF2118	18 MIN	6.1 MIN	8.9(+0.02/0)	14(0/-0.1)	12(+0.04/+0.02)	19.5±0.1	1.7±0.05	-	
#	SBF2118	18 MIN	6.2 MIN	12(+0.05/+0.03)	18.1(+0.05/+0.02)	16(+0.09/+0.05)	23.8±0.15	-	8.5±0.1	
#	SBF4118	18 MIN	6.6 MIN	13.4(+0.02/0)	19.6(+0.048/+0.028)	17.6(+0.048/+0.028)	23.8(0/-0.2)	-	8.3(+0.15/0)	
#	SBF4118	-	6.6 MIN	5.5±0.1	10.3±0.05	9(+0.1/+0.05)	23.5±0.1	1.6±0.05	-	
#	Sint D30	-	6.8~7.2	28	39.2	33	13.8±0.05	3.6±0.1	-	
#	CuSn10	16 MIN	6.0 MIN	10(+0.208/+0.15)	20±0.1	16(+0.12/+0.05)	14.5±0.1	3±0.05	-	
#	CuSn10	16 MIN	6.2 MIN	7(+0.03/+0.005)	13	11(+0.05/0)	5.75	-	3.75	
#	CuSn10	18 MIN	6.0 MIN	6.44(+0.05/0)	12.7	9.7(+0.05/0)	18.32±0.05	1.2±0.05	-	
#	CuSn10	16 MIN	6.1 MIN	8(+0.035/+0.015)	15.5(0/-0.1)	12(+0.02/-0.01)	7.5(0/-0.05)	2±0.05	-	
#	CuSn10	16 MIN	6.1 MIN	12(+0.035/+0.015)	21.8	16(+0.045/+0.02)	9.1(+0.1/0)	4.1±0.05	-	
#	FN-0205	-	6.8~7.2	8.41±0.05	18.3	14.961-14.986	-	1.78	17.73±0.02	
#	F-0005	-	6.4~6.8	7.7978-7.7216	21.082	15.0114-14.986	14.224	6.3754	-	
#	FC-0205	-	6.9 MIN	9.26±0.01	15	12.95	6.4	-	2.6	大端面带棘齿
#	FC-0205	-	7.2 MIN	9.75(-0.005/-0.025)	18.6±0.1	21.1±0.1	-	15.8±0.1	-	台阶外径为齿形
#	FC-0205	-	6.6 MIN	48(+0.15/+0.05)	64	60	40(-0.2/-0.3)	-	15	
#	FC-0205	-	6.9 MIN	43(+0.15/+0.05)	64	60	33(-0.3/-0.5)	-	12	
#	FC-0208	7 MIN	6.8 MIN	5(+0.05/+0.03)	13	10(-0.016/-0.05)	5.8(0/-0.1)	1.8(0/-0.1)	-	

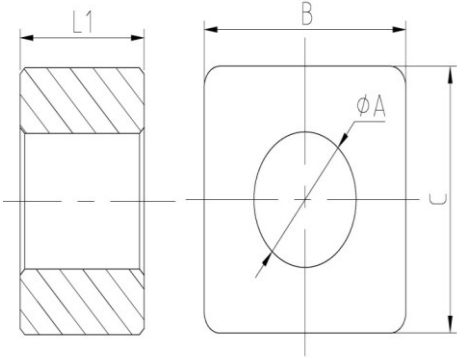
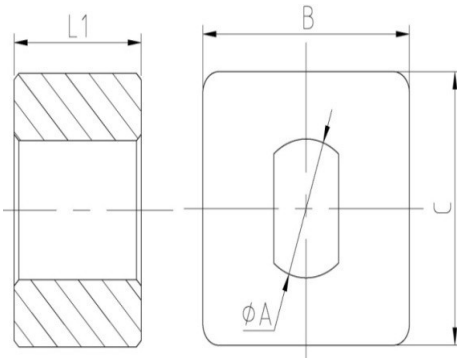
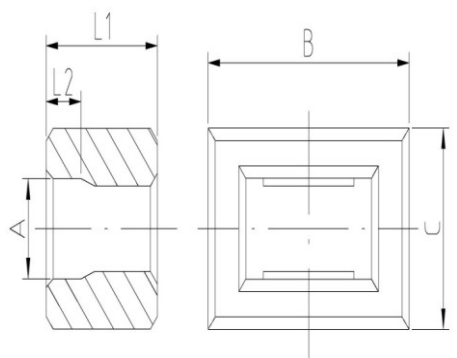


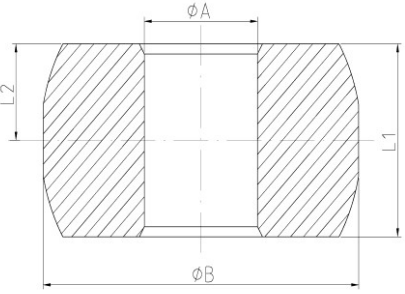
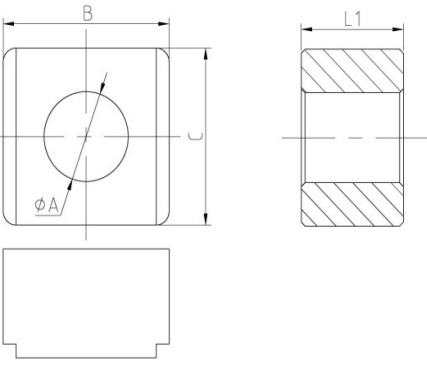
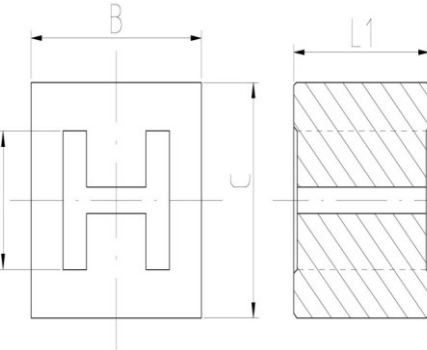
# 特殊轴承

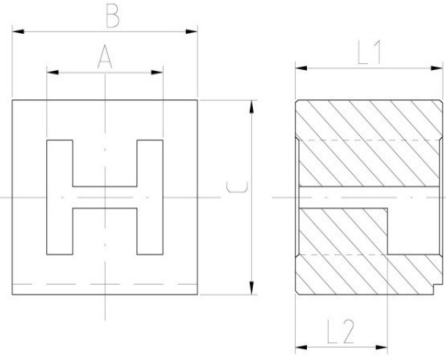
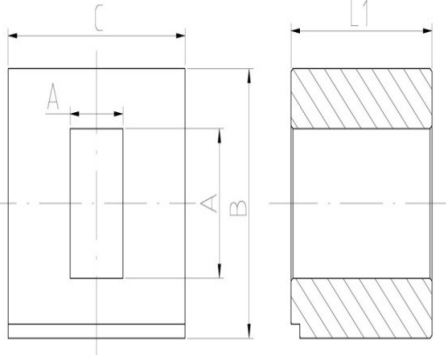
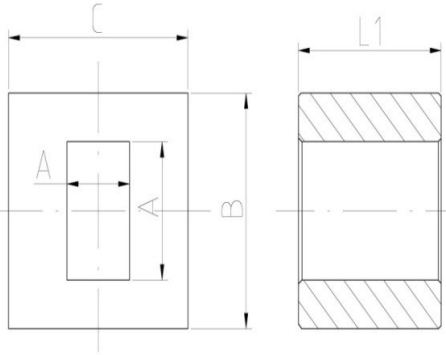
序号	示意图	材质	含油率(%)	密度(g/cm <sup>3</sup> )	ΦA	ΦB	ΦC	L1	L2
1		FC0205-60HT	7 MIN	6.8~6.9	5(+0.048/+0.03)	13	-	7.3(0/-0.1)	3.3(0/-0.1)
2		FC-0205	16 MIN	5.6 MIN	15(+0.024/+0.006)	25(0/-0.2)	21(+0.025/0)	24.5(0/-0.15)	3(0/-0.2)

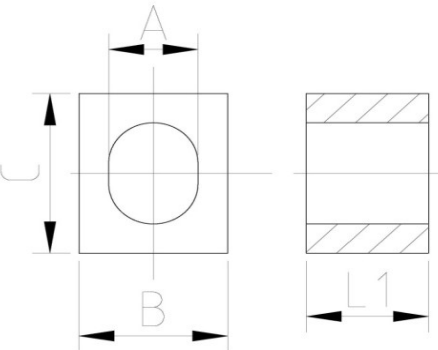
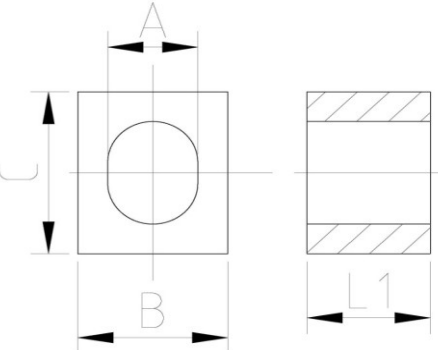
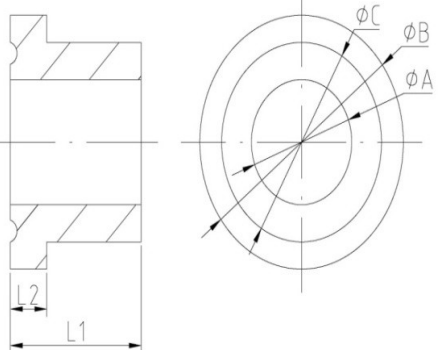
3		SBF2118	16 MIN	6.1 MIN	45(+0.095/+0.07)	57.4(0/-0.2)	53(+0.071/+0.041)	12(0/-0.1)	2.5(+0.05/0)
4		SBF2118	7 MIN	6.5 MIN	9(+0.036/0)	13(0/-0.1)	18.5	8	5(-0.04/-0.06)
5		SBF2118	7 MIN	6.6 MIN	9(+0.036/0)	9(+0.036/0)	18(0/-0.1)	17.8(0/-0.043)	12±0.1

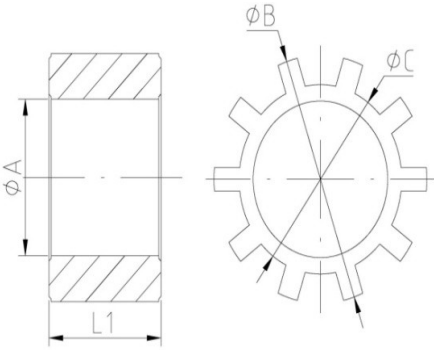
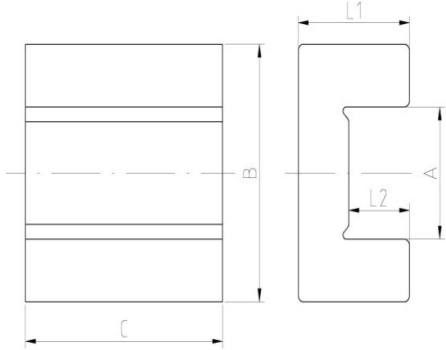


6		SBF2118	18 MIN	6.0 MIN	7.8(+0.09/+0.06)	13±0.05	13±0.05	8(0/-0.1)	-
7		SBF2118	18 MIN	6.0 MIN	7.8(+0.09/+0.04)	13±0.05	13±0.05	8(0/-0.1)	-
8		SBF2118	18 MIN	6.2 MIN	4±0.05	14.4±0.05	8±0.1	8±0.05	2.5±0.05

9		SBF2118	18 MIN	5.8~5.9	7.9(+0.025/-0.001)	22.2±0.15	-	11.44±0.1	5.72
10		SBF2118	12 MIN	6.0~6.4	13(+0.03/+0.015)	8.9(0/-0.03)	20(+0.03/+0.01)	15(0/-0.1)	-
11		SBF2118	18 MIN	6.2 MIN	11.1±0.02	20.1±0.02	18.9(0/-0.05)	16(0/-0.05)	-

12		SBF2118	18 MIN	6.2 MIN	12.6±0.02	20.1±0.02	18.9(0/-0.05)	16(0/-0.05)	10±0.1
13		SBF2118	18 MIN	6.1 MIN	10.5(+0.1/+0.05) *6(+0.1/+0.05)	18.9±0.05	20.1±0.05	16±0.075	-
14		SBF2118	18 MIN	6.1 MIN	10.5(+0.1/+0.05) *6(+0.1/+0.05)	18.9±0.05	20.1±0.05	16±0.075	-

15		SBF2118	11 MIN	5.8-6.2	7.87-7.89	12.90-12.93	14.58-14.83	8.03-8.28	-
16		SBF2118	8 MIN	5.8~6.2	7.87-7.89	12.90-12.93	14.58-14.83	8.03-8.28	-
17		SBF2118	18 MIN	6~6.4	6.9(+0.02/+0.005)	14(0/-0.5)	11(+0.03/+0.01)	9.5±0.1	2.5±0.05

18		Sint D10	10 MIN	6.4-6.8	12(+0.059/+0.038)	(+0.05/-0.0)	14.5	10(0/-0.2)	-
19		CuSn10	18 MIN	6.5 MIN	10 (+0.1/0)	19.5±0.1	19.5±0.1	11(0/-0.1)	6(+0.1/+0.05)